

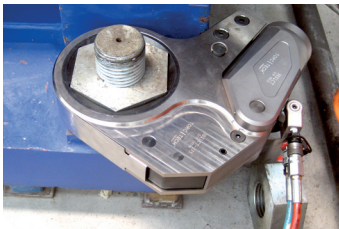
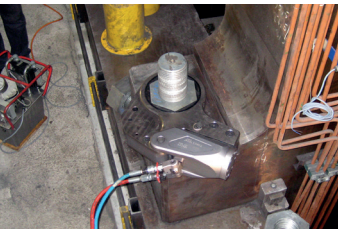
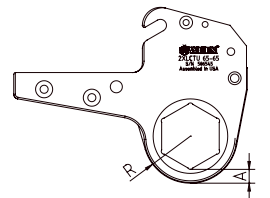
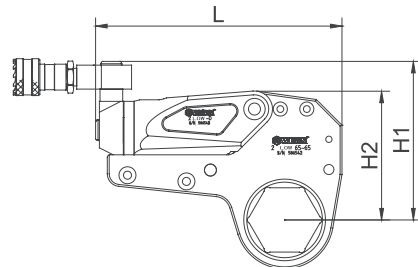
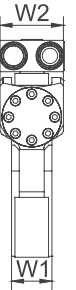
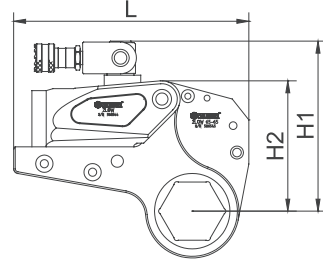
LOW Series | Kasetli Hidrolik Tork Anahtarları

Low Profile Hydraulic Torque Wrench

- 700 bar maksimum çalışma basıncı
- Sürekli tekrarlanabilen torklama hassasiyeti \pm %3
- 230 Nm den 45.000 Nm ye kadar 5 farklı model
- Maksimum çalışma basıncında sürekli çalışma olanağı
- Minimum et kalınlığında (radius) maksimum tork kuvveti
- 360° x 180° çok pozisyonlu dönebilen yağ giriş portu
- Bütün somun ölçülerine uygun ölçü düşürücü burçlar
- Kare veya alyan sürücü adaptör seçenekleri
- Türkiye'de servis - kalibrasyon ve yedek parça desteği
- Repeatability \pm 3%
- 700 bar maximum operation pressure
- 5 different models from 230 Nm to 45,000 Nm
- Designed for tighten and loosen high torque applications
- 360° x 180° uni swivel quick release couplings
- Maximum torque power with minimum wall thickness
- Various cassettes, adaptors and reducers are available
- Durable structure, aluminium-titanium alloy and light body
- Suitable for continuous operations at maximum pressure
- Pressure relief valve prevents over pressure



| Typ Type | Drehmoment Torque (Nm) | | Kaset Seçeneği Hex. Size (mm) | Kaset Cassettes (Kg) | Piston Power Head (Kg) | Ölçüler / Sizes (mm) | | | | |
|-------------|------------------------------|-------|--|----------------------------|---------------------------------|-------------------------|-------|-------|----|-----|
| | Max | Min | | | | L | H1 | H2 | W1 | W2 |
| 2LOW | 2.300 | 230 | 19 ~ 55 | 1,6 | 1 | 196 | 126 | 102,5 | 32 | 51 |
| | 2.400 | 240 | 60 | 1,7 | 1 | 196 | 128,5 | 105 | 32 | 51 |
| 4LOW | 5.850 | 585 | 34 ~ 65 | 4,4 | 2 | 245 | 177 | 138 | 42 | 66 |
| | 6.475 | 645 | 70 ~ 80 | 4,6 | 2 | 246 | 187 | 146 | 42 | 66 |
| 8LOW | 10.940 | 1.095 | 41 ~ 95 | 8 | 3,3 | 300 | 207 | 169 | 53 | 83 |
| | 11.775 | 1.175 | 100 ~ 105 | 8,4 | 3,3 | 301 | 216 | 178 | 53 | 83 |
| 14LOW | 18.500 | 1.850 | 50 ~ 117 | 11,6 | 5,5 | 361 | 239 | 204 | 64 | 99 |
| 30LOW | 41.800 | 4.180 | 85 ~ 155 | 29 | 11,4 | 430 | 303 | 272 | 85 | 131 |
| | 44.500 | 4.450 | 160 ~ 175 | 30 | 11,4 | 441 | 315 | 285 | 85 | 131 |



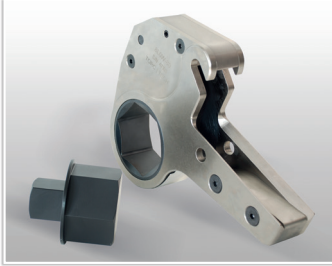
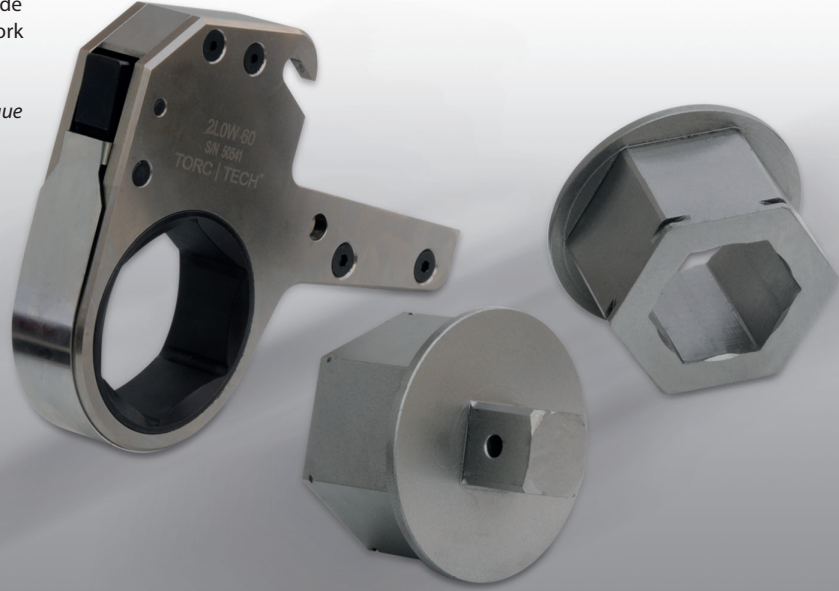
LOW Series | LOW Serisi Hidrolik Tork Anahtarları Kaset Seçenekleri Low Profile Hydraulic Torque Wrench

LOW serisi kasetli hidrolik tork anahtarları bütün somun ölçülerinde kaset seçeneğine sahiptir. Her model kapasitesinin öngördüğü tork değerlerine göre anahtar ağız kaset ölçüsünü sunar.

All removable cartridges of LOW are designed for the maximum torque of each drive cylinder.

Hexagon Cassette Reducers

Torc-Tech hex reducers are available in any size.



| 2 LOW | | | | 4 LOW | | | | 8 LOW | | | | 14 LOW | | | | 30 LOW | | | |
|---------------------|---------|--------|--------|---------------------|---------|--------|--------|---------------------|---------|--------|--------|---------------------|---------|--------|--------|---------------------|---------|--------|--------|
| Kassetten Cassettes | SW (mm) | R (mm) | A (mm) | Kassetten Cassettes | SW (mm) | R (mm) | A (mm) | Kassetten Cassettes | SW (mm) | R (mm) | A (mm) | Kassetten Cassettes | SW (mm) | R (mm) | A (mm) | Kassetten Cassettes | SW (mm) | R (mm) | A (mm) |
| 2LOW-19 | 19 | 27 | 16 | 4LOW-34 | 34 | 36 | 16 | 8LOW-41 | 41 | 46 | 22 | 14LOW-50 | 50 | 60 | 31 | 30LOW-85 | 85 | 78 | 28 |
| 2LOW-22 | 22 | 27 | 14 | 4LOW-36 | 36 | 36 | 15 | 8LOW-46 | 46 | 46 | 19 | 14LOW-55 | 55 | 60 | 28 | 30LOW-90 | 90 | 78 | 27 |
| 2LOW-27 | 27 | 27 | 11 | 4LOW-41 | 41 | 39 | 15 | 8LOW-50 | 50 | 46 | 17 | 14LOW-60 | 60 | 60 | 25 | 30LOW-95 | 95 | 83 | 28 |
| 2LOW-30 | 30 | 29 | 12 | 4LOW-46 | 46 | 42 | 15 | 8LOW-55 | 55 | 50 | 18 | 14LOW-65 | 65 | 60 | 22 | 30LOW-100 | 100 | 83 | 25 |
| 2LOW-32 | 32 | 29 | 11 | 4LOW-50 | 50 | 44 | 15 | 8LOW-60 | 60 | 52 | 17 | 14LOW-70 | 70 | 60 | 19 | 30LOW-105 | 105 | 89 | 28 |
| 2LOW-34 | 34 | 31 | 11 | 4LOW-55 | 55 | 46 | 14 | 8LOW-65 | 65 | 55 | 17 | 14LOW-75 | 75 | 63 | 19 | 30LOW-110 | 110 | 89 | 25 |
| 2LOW-36 | 36 | 31 | 10 | 4LOW-60 | 60 | 50 | 15 | 8LOW-70 | 70 | 58 | 17 | 14LOW-80 | 80 | 66 | 19 | 30LOW-115 | 115 | 95 | 28 |
| 2LOW-41 | 41 | 34 | 10 | 4LOW-65 | 65 | 53 | 15 | 8LOW-75 | 75 | 60 | 17 | 14LOW-85 | 85 | 69 | 19 | 30LOW-117 | 117 | 95 | 27 |
| 2LOW-46 | 46 | 37 | 10 | 4LOW-70 | 70 | 56 | 15 | 8LOW-80 | 80 | 63 | 16 | 14LOW-90 | 90 | 72 | 20 | 30LOW-120 | 120 | 95 | 25 |
| 2LOW-50 | 50 | 40 | 11 | 4LOW-75 | 75 | 59 | 15 | 8LOW-85 | 85 | 66 | 16 | 14LOW-95 | 95 | 74 | 19 | 30LOW-125 | 125 | 101 | 29 |
| 2LOW-55 | 55 | 43 | 11 | 4LOW-80 | 80 | 61 | 15 | 8LOW-90 | 90 | 69 | 7 | 14LOW-100 | 100 | 77 | 19 | 30LOW-130 | 130 | 101 | 26 |
| 2LOW-60 | 60 | 46 | 11 | | | | | 8LOW-95 | 95 | 71 | 16 | 14LOW-105 | 105 | 80 | 19 | 30LOW-135 | 135 | 104 | 26 |
| | | | | | | | | 8LOW-100 | 100 | 75 | 17 | 14LOW-110 | 110 | 83 | 19 | 30LOW-140 | 140 | 110 | 29 |
| | | | | | | | | 8LOW-105 | 105 | 78 | 17 | 14LOW-115 | 115 | 87 | 20 | 30LOW-145 | 145 | 110 | 26 |
| | | | | | | | | | | | | 14LOW-117 | 117 | 87 | 19 | 30LOW-150 | 150 | 116 | 29 |
| | | | | | | | | | | | | | | | | 30LOW-155 | 155 | 116 | 26 |
| | | | | | | | | | | | | | | | | 30LOW-160 | 160 | 128 | 36 |
| | | | | | | | | | | | | | | | | 30LOW-165 | 165 | 128 | 33 |
| | | | | | | | | | | | | | | | | 30LOW-170 | 170 | 128 | 30 |
| | | | | | | | | | | | | | | | | 30LOW-175 | 175 | 128 | 27 |