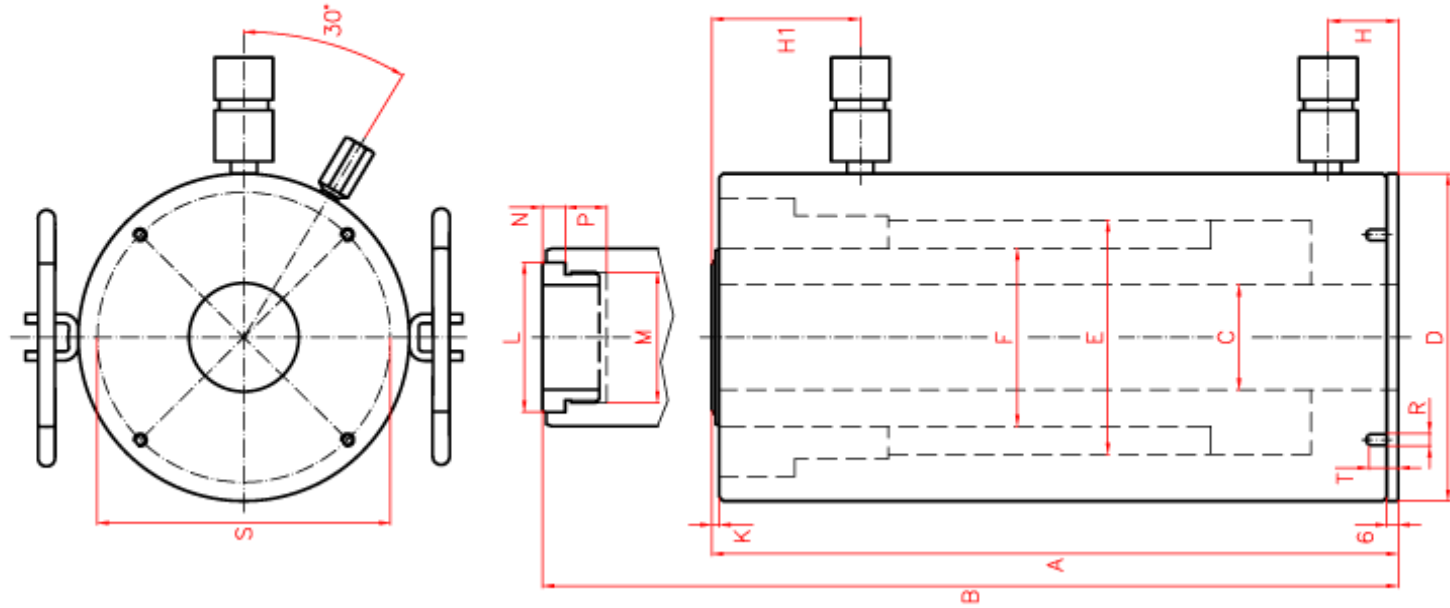


DAH Çift Etkili Alüminyum Gövde Delikli Piston Krikolar



Kapasite	Strok	Model	Kapasite		Yağ	A	B	C	D	E	F	H	H1	K	L	M	N	P	R	S	T	Etki	Ağırlık
Ton	mm	LARZEP	Basma	Çekme	Kapasitesi	mm	mm	mm	mm	mm	mm	mm	mm	mm	mm	mm	mm	mm	mm	mm	mm	cm ²	kg
30	50	DAH03005	302	173	220	217	267	33	130	90	70	32	61	4	55	1 11/13"-16	9	22	M6	110	19	44	7
	100	DAH03010	302	173	440	267	367	33	130	90	70	32	61	4	55	1 11/13"-16	9	22	M6	110	19	44	9
	150	DAH03015	302	173	660	317	467	33	130	90	70	32	61	4	55	1 11/13"-16	9	22	M6	110	19	44	12
	200	DAH03020	302	173	880	367	567	33	130	90	70	32	61	4	55	1 11/13"-16	9	22	M6	110	19	44	13
	250	DAH03025	302	173	1.100	417	667	33	130	90	70	32	61	4	55	1 11/13"-16	9	22	M6	110	19	44	15
60	50	DAH06005	578	356	421	225	275	56	175	125	95	37	66	4	80	2 3/4"-16	12	22	M6	155	19	84	13
	100	DAH06010	578	356	842	275	375	56	175	125	95	37	66	4	80	2 3/4"-16	12	22	M6	155	19	84	16
	150	DAH06015	578	356	1.263	325	475	56	175	125	95	37	66	4	80	2 3/4"-16	12	22	M6	155	19	84	19
	200	DAH06020	578	356	1.684	375	575	56	175	125	95	37	66	4	80	2 3/4"-16	12	22	M6	155	19	84	22
	250	DAH06025	578	356	2.105	425	675	56	175	125	95	37	66	4	80	2 3/4"-16	12	22	M6	155	19	84	25
100	50	DAH10005	1.019	647	742	256	306	81	235	170	130	40	80	6	116	4"-16	13	25	M6	215	19	148	27
	100	DAH10010	1.019	647	1.484	306	406	81	235	170	130	40	80	6	116	4"-16	13	25	M6	215	19	148	33
	150	DAH10015	1.019	647	2.226	356	506	81	235	170	130	40	80	6	116	4"-16	13	25	M6	215	19	148	38
	200	DAH10020	1.019	647	2.968	406	606	81	235	170	130	40	80	6	116	4"-16	13	25	M6	215	19	148	43
	250	DAH10025	1.019	647	3.710	456	706	81	235	170	130	40	80	6	116	4"-16	13	25	M6	215	19	148	49
150	50	DAH15005	1.408	567	1.025	261	311	81	260	190	160	50	80	10	135	4 1/4"-12	20	40	M6	240	19	205	36
	100	DAH15010	1.408	567	2.050	311	411	81	260	190	160	50	80	10	135	4 1/4"-12	20	40	M6	240	19	205	43
	150	DAH15015	1.408	567	3.075	361	511	81	260	190	160	50	80	10	135	4 1/4"-12	20	40	M6	240	19	205	51
	200	DAH15020	1.408	567	4.100	411	611	81	260	190	160	50	80	10	135	4 1/4"-12	20	40	M6	240	19	205	57
	250	DAH15025	1.408	567	5.125	461	711	81	260	190	160	50	80	10	135	4 1/4"-12	20	40	M6	240	19	205	64